



# Community Forest News

Winter 2021-22

*The Community Forest is comprised of two organizations, the Harrop Procter Community Co-operative, which manages the forest tenure and mill, and the Harrop Procter Watershed Protection Society, a stewardship body that undertakes monitoring of HPCC plans and activities, water monitoring, education and outreach.*

## Upcoming Annual General Meeting

The cooperative's Annual General Meeting (AGM) will be held on **May 18, 2022**, location to be determined dependent on any pandemic restrictions in place at the time.

Please plan to attend this important event, and consider joining the Board of Directors.

It is an important meeting, not only because of several retirements and hiatuses, but also because the organization itself is at the point where the next generation needs to step up and continue to build on the work done over the past 20 years.

HPCC was the second organization to be granted a community forest license in the province. There are now sixty. It was the first - and for many years the only - one to operate its own mill.

As far as visibility, recognition, renown and range of audience with knowledge of its operations, HPCC regularly punches well above its weight. The average population of communities supporting a community forest license is about 4,000 - here it is around 700.

Through the efforts of its founders, volunteers, employees and contractors, HPCC is well known in forestry circles throughout the province. To a lesser extent, it is known nationally, and even internationally, for a progressive, innovative and ecologically sustainable approach adhering to the key principles that guide it.

All well and good, but change is a constant. The shift to younger, newer community members

needing to get involved and gradually take the reins moving forward is relatively close at hand. Operations at the mill are nearing the point where critical decisions for the future need to be carefully considered, thoughtfully planned.

It is a daunting time but also an exciting one. Consider joining the board, becoming a member and most of all - be involved and supportive. An infusion of renewed energy and new folks will ensure the organization continues to thrive and give back to the community moving forward.

We've made huge strides over the past twenty some years. We need to continue doing just that.

Contact any of the current Directors for more information, or call the office (staffed Mondays) at (250) 229-2271. Thanks!

## Donations

Harrop Procter Watershed Protection Society  
\$8000.00

Nelson Food Bank  
\$2000.00

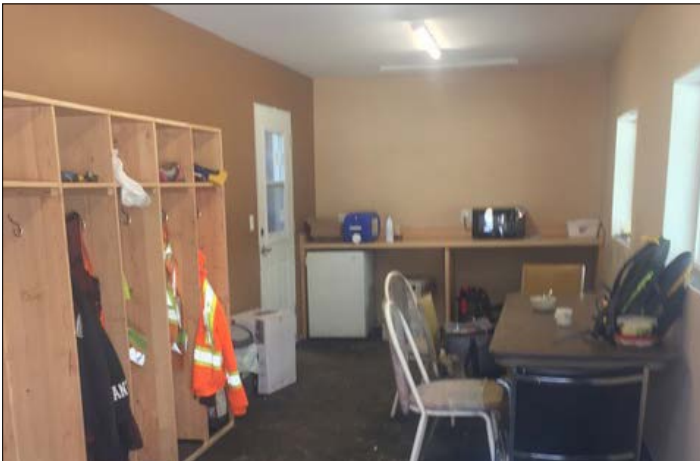
Procter Community Society  
\$2000.00

**Year to date: \$12,000.00**

## Harrop Procter Forest Products (HPFP)

Improvements to the mill property were undertaken over the two week shutdown in late December. The enclosure and insulation of the Scragg mill has helped considerably with noise levels, reducing the inconvenience caused to nearby neighbours when the Scragg is operating. Noah Critchley, a local carpenter from Procter, built the enclosed structure.

The old kiln was also renovated. It was converted from a storage facility to a break/lunch room for employees. Rami Rothkop and Philippe Gawthrop spearheaded the renovation with various local contractors involved in the drywall installation, electrical work and painting. New windows and doors were installed; the wooden lockers were built by Carol Feagan in his Rainbow Ridge workshop.



*Interior of new break/lunch room*

Yard lights were also installed to improve safety. Before and after the winter solstice they were required by end of day.

Shane McKinnon from Timber Ridge Logging is currently working on CP Block 154 in West Procter. Logs are being temporarily stored - at no cost other than a few cords of firewood - on the property to the south of the mill owned by Gordon and Jeanette Sutherland. This generous gesture allows easy access as log and lumber inventories get replenished prior to the anticipated increase in business over the next few months.

Sales continue to be strong in early 2022. The HPFP budget for the year was reviewed and recommended for approval by the Finance Committee in January; it was approved by Directors at the February board meeting.

## HPCC Scholarship Fund

At the January board meeting Directors voted unanimously to rename the scholarship fund to honour one of the founding members of the cooperative and the watershed society.

Anne Ward was a long-time board member for both organizations, as well as serving as Treasurer for both at various times, sometimes simultaneously. She was a tireless volunteer while active, and a dedicated supporter in her later years. Anne passed away in November 2021.

The scholarship program will now be known as the Anne Ward Memorial Scholarship fund. In future, there will be two set amounts of annual funding for the program:

\$2000 for a LV Rogers graduating student(s) going into their first year of post-secondary education and \$1000 for a student(s) already studying at the post-secondary level.

Eligible candidates must be from the Outlet area (Longbeach, Harrop, Sunshine Bay, Balfour, Procter and Queens Bay). Regulations and the application form can be found on the HPCC website: [hpcommunityforest.org](http://hpcommunityforest.org) or obtained by calling the office at (250) 229-2271 Mondays between 8:30 am - 1:00 pm.

The deadline to apply for this year is **April 30th**.

The committee that administers the Anne Ward Memorial Scholarship fund is seeking a second community (non-Board) representative to review applications and determine successful candidates. If you would like to volunteer in this regard, please call the office at (250) 229-2271 or e-mail: [coordinator@hpcommunityforest.org](mailto:coordinator@hpcommunityforest.org)

# Forest Operations

Who is working in the woods in our community forest these days? Here is a cross-section of folks at work from the summer and fall of 2021.



Shelby Rockwell, machine operator for Phoenix Harvesting



Kea Rutherford & Marina Galvao (UBC researchers) with Blake Garrett



Amy Allcock and Carlo Alcos filming for Watershed Productions



Ray Dosenberger building road in West Harrop



Erik Leslie, HPCC forest manager with broken ankle



Thomas Sproule and John Nesbitt, Wildfire Forestry Services



Dylan Henderson and Wildhorse Forestry brushing crew on East Harrop Ridge

# New Harrop Procter Community Cooperative Staff

## Michele Dupas



Michele Dupas - HPCC office administrator

Michele moved from Vancouver to the Kootenays in 1993. She left for four years in 2003 to pursue a visual arts degree from Red Deer College. During that time, she worked for the college as a Performing Arts Coordinator, administering the music and dance Continuing Education programs. Missing the Kootenays, Michele returned and settled in Procter.

Michele brings considerable administrative experience to the organization. As office manager for 14 years with Kootenay Lake Ferries in Balfour, she provided expertise and support for management, staff and crew. As well, ongoing liaison and coordination with the Ministry of Transportation, Highways and Infrastructure (MOTI) was an essential part of her work.

She left Kootenay Lake Ferries two years ago to open Gallery 229 - located in the Procter Schoolhouse - and sell her ceramics through her online store. Part-time administrative work for the cooperative and HPWPS in the same building as her gallery, and steps from home, was appealing; Michele started in October 2021.

## CONTACT US

HPCC  
202 - 286 3rd Avenue  
Procter, B.C.  
V0G 1V0  
office@hpcommunityforest.org  
(250) 229-2271

HPFP  
730 S. Ogilvie Road  
Harrop, B.C.  
V1L 6P9  
sales@hpcommunityforest.org  
(250) 551-5452

[www.hpcommunityforest.org](http://www.hpcommunityforest.org)

## Emily Gould

Emily started with the cooperative at the end of November, 2021. She is working part time, both in the office - one day a week ordinarily - and remotely.

Born and raised in England, Emily acquired a degree in Natural Sciences from the University of Bath. Continuing her education, she obtained the equivalent of a Canadian CMA.



Emily Gould - HPCC bookkeeper

With her designation from the Chartered Institute of Management Accountants (CIMA) in hand, she spent five years in the European headquarters (London) of the multinational financial services company Morgan Stanley.

A break from the corporate world together with a desire to travel brought her to Canada, and eventually to British Columbia. She travelled extensively throughout the province before deciding to settle with her partner in the Uphill neighbourhood in Nelson.

In addition to assuming bookkeeping duties for HPCC, Emily manages the venerable bar/live entertainment venue The Royal weekday evenings.

Welcome Emily!

HPCC members get a 10% discount, so send us your email address if you would like to be informed of upcoming specials!



To request a donation, not-for-profit groups simply need to provide details of the project and community benefits on their letterhead and submit to: office@hpcommunityforest.org