



Harrop Procter Community Co-Op  
Progressive Forestry. Quality Wood. Community Owned

# Community Forest News

Spring 2024

The Community Forest is comprised of two organizations:

the Harrop Procter Community Co-operative, which manages the forest tenure and mill, and the Harrop Procter Watershed Protection Society, a stewardship body that undertakes monitoring of HPCC plans and activities, water monitoring, education and outreach.

## Harrop-Procter Watershed Protection Society

The society's Board of Directors met in both April and May. This is the result of changing from quarterly to bi-monthly meetings, or on an as-needed basis. A number of initiatives are ongoing or in the planning stages:

Water Monitoring program:

- data readers being replaced
- flow measurements on monitored creeks during spring freshet
- 2023 report expected in June/July
- consideration of program expansion

Watersheds Canada's Nature Studies Backpack Lending program:

- developed in Ontario in 2020
- a national program adapted to region-specific areas
- planned loans of the educational backpacks will be coordinated by HPWPS potentially through Redfish School and the Procter Library

Information and Outreach:

- drought/water use information poster being developed
- independent web site being developed
- Improved coordination with like-minded organizations (Living Lakes Canada, West Kootenay Watershed Collaborative, Upper Columbia Basin Environmental Collaborative, etc.)
- enhanced member recruitment underway

The next scheduled meeting of the board is July 17, 2024. Please contact administrator Britta Barteski if you wish to attend the meeting, or join the organization. She can be reached at (250) 229-2271.

## Community Engagement Committee

This committee is responsible for community interaction, donations, communications/marketing, scholarship administration, website/social media, advertising, and events coordination.

Members are office administrator Britta Barteski and HPCC Directors Diane Gamble, Gerry Held and Bill Macpherson. The scholarship sub-committee component also includes Tim Held as one of the public representatives with the other public representative position currently vacant.

**It would be nice to see a community member step up and volunteer to fill this vacancy.** The obligation is minimal - one meeting a year to review scholarship applications, and amend regulations if required. Contact our administrator at (250) 229-2271 to volunteer.

The committee met shortly after the scholarship deadline had passed to review applications. This year there was a record number, five in all. After discussion and deliberations, two scholarships worth \$1000 each and three bursaries worth \$500 each were awarded. The granting of the awards is dependent on proof of successful admission to a post-secondary institution in the fall.

Co-winners of the Anne Ward Memorial Scholarship for 2024 are Jasper Joniee and Lucca Dehnel, both from Harrop. Bursary recipients are Ashley and Brooke Sonnischen from Longbeach and Nico Bucher from Sunshine Bay.

## Public Meeting

On **Wednesday, June 19th at 7:00 pm** there will be a public meeting at the Harrop Hall. HPCC's forester Erik Leslie will give a presentation on HPCC's recently completed climate adaptation project, as well as recent operations and future plans. The presentation will be followed by a question and answer session; light refreshments will be available prior to the start of the meeting.

If you are relatively new to the community this is a good opportunity to learn about our community forest and how it, along with the sawmill (Harrop Procter Forest Products), is managed by the cooperative.

# Forest Operations

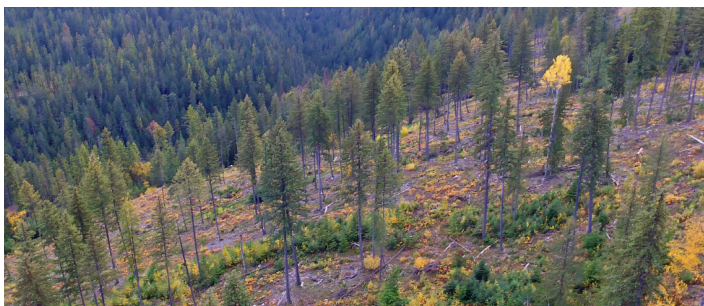
In response to community concerns that originated from the 2003 and 2017 Harrop Creek wildfires, HPCC has been hard at work developing a network of fuel breaks above Harrop and Procter. For the past several years, HPCC's forestry operations have been almost exclusively focused on this fuel break network, which is now approximately 70% complete.

The vast majority of forests in the Harrop-Procter area originated from very large fires in the early 1900's and are now very dense with high fuel loads. These are unnaturally high due to 80 years of fire suppression, and fire risks are generally high to very high near our community. Fuel breaks include forests that have been thinned to significantly reduce understory fuels and create canopy gaps so that a wildfire will burn at lower intensity. Access is deliberately planned to facilitate fire control efforts in the event of an approaching wildfire.



Typical forest conditions and fuel loads above Harrop

Last winter HPCC completed work in units located on the east side of Harrop Creek and the east side of Carson Creek. Work is now focused on the area between Slater Creek and Narrows Creek.



Thinned forest in Harrop, October 2023

Over the past three years, HPCC has also been clearing understory fuels adjacent to East Harrop Road, Narrows Road, and Carson Road. Crews have been manually cutting and burning debris to improve the effectiveness of these roads as fire guards. HPCC has been able to secure approximately \$600,000 of funding from the Forest Enhancement Society of BC. (FES-BC) to complete this labour-intensive work.



Crew from Wildfire Forestry Services working in Carson Road area  
For more information, including maps and plans, please visit our website - [hpcommunityforest.org](http://hpcommunityforest.org) and explore the Forest Management tab.

## Firewood Event

Again this year, the cooperative is offering HPCC members the opportunity to cut and load some firewood for their personal use.

The event will take place at the Harrop Hall grounds on **Saturday, May 25th from 9:00 am until 3:00 pm**. Donation jars will be at the sign-in tables and all donations will go towards the ongoing Harrop Hall renovation project.

A liability waiver **MUST** be signed and proper safety measures/equipment employed. Non-members can purchase a lifetime HPCC membership for \$25 on site in order to participate.

Please adhere to the following:

- no cutting except during the identified times;
- take a pickup truck box (no sides) or small trailer's worth of wood **ONLY**. If there is wood still available at the end of the day there will be a notification on the community e-mail to that effect;
- there is a limit of one load of wood per household;
- assist others by cutting/loading once you have your own wood;
- be generous in your donation. Volunteers from both the HPCC and the Hall Society (HDCC) are giving up their weekend to staff the event and clean up the next day;
- be safe, helpful to and considerate of others.

# Strategic Planning Committee

On Friday, April 19th, the provincial Manufacturing Jobs Fund initiative announced funding for the mill revitalization project. The announcement was made at Kokanee Creek Provincial Park (backdrop was the community forest) by Roly Russell, Similkameen-Boundary MLA and the Parliamentary Secretary for Rural Development. Nelson-Creston MLA Brittany Anderson also attended, as did a number of HPFP employees and board members.

The government's news release can be viewed here: <https://news.gov.bc.ca/releases/2024JEDI0021-000592>

The Manufacturing Jobs Fund contribution of \$215,000 is in addition to the significant funds (approximately \$750,000 once all the components are completed) being invested in the mill by the cooperative. These funds will ensure the mill is well positioned for the future - a changing forest, smaller diameter logs - while improving efficiencies, electrical capacity, waste utilization and worker protection.

The permitting process has been challenging. RDCK continues to present new and/or changing requirements. These are being addressed - currently the committee and mill staff are working with an architect and an engineer to meet the latest set of requirements. Barring yet more changes, this should result in permit approval in the next month or so. At that point in time, the two small building projects can be started.

Nelson Hydro will be onsite to install the new transformer in the coming weeks. The additional electrical capacity will allow multiple pieces of equipment to operate simultaneously while reducing the use of gas powered tools and equipment.

The new re-saw has been delivered and tested; it will be ready for installation over the summer. The re-saw upgrade processes smaller logs more efficiently. It also reduces strain on staff as it takes fewer passes through the saw to produce lumber products.

Recently, HPCC acquired the adjacent property (just over seven acres) on the east side of the mill. Planning will begin this summer to shift access and parking, as well as consideration of what community opportunities the land might offer.

Once done, this will create a safer situation for customers and logging truck operators, and eliminate mill traffic flowing through the Ogilvie Rd. neighbourhood. The Johnson family has very graciously allowed HPCC access through their property for many years now. We are pleased that this imposition will no longer be necessary in the coming months.



HPCC staff and board members with MLA's at Kokanee Park

## Donations

Harrop Procter Watershed Protection Society (education/projects) - \$10,000.00

Kootenay Lake Hospital Foundation (fundraiser donation) - \$300.00

Procter Community Society (community history project/exhibition) - \$3500.00

Triple Rose Arts & Craft studio (lumber for shelving)- \$240.00

Starbilly Jam festival (event sponsorship) - \$300

Total \$14,340.00

# Harrop Procter Forest Products

As always, the mill is a busy, active workplace. Sales have been good, helped by discounted prices on some overstocked inventory, and that trend looks to continue throughout the summer months. Lifts of 1" X 4" boards of #3 rough cedar and fir are still available - for now - at sixty per cent off.

Progression in implementing certain aspects of the revitalization project, described in more detail under the Strategic Planning update, has been hampered due to changing conditions regarding permits.

Currently, permits applied for in the fall of 2023 still have not been issued. Mill staff and the Strategic Planning committee continue to work patiently with the RDCK; however, given the minimal scope of planned modifications it is frustrating to say the least.

There have been some personnel changes as well. Eric Martin, one of the mill co-managers, has opted to pursue other opportunities after twelve years at HPFP. His efforts over the years towards improving both operations and sales at HPFP are acknowledged and appreciated by the board. Success and good wishes in your future endeavours Eric!

Also recently departed is Jonathan Chappelow-Hansen. He was offered a supervisory position in his field of expertise that fit him very nicely. Jonathan plans to stay involved in one or both of the organizations (HPCC and HPWPS) moving forward, potentially as a board member.

As a result, a number of part-time staff have joined, or re-joined, operations. Bernie Love is working part-time most mornings, Dirk Segstro is



Kent Liu

Kyle Sokoloski

doing deliveries primarily and new hires Kent Liu and Kyle Sokoloski - both Procter residents - are working three and four days a week respectively. This could increase to full time as it gets busier.

The log loader, purchased many years ago for a minimal price, is at the end of its life. Second-hand replacement options are being explored (a new one is \$600,000 plus; our budget is one third of that) and there are a number of suitable machines available that are being checked out. In the interim, one of the cooperative's contractors has rented his machine to the mill for a short period of time. This ensures continued operations prior to the purchase of a replacement - which should be soon - once due diligence is done.

Customers are asked to always place their orders ahead of time by calling 551-5452 or emailing [sales@hpcommunityforest.org](mailto:sales@hpcommunityforest.org). Doing this improves efficiencies and doesn't interrupt regular activities in the mill yard. HPFP thanks you for your cooperation.

## CONTACT US

HPCC  
202 - 284 3rd Avenue  
Procter, B.C.  
V1L 0B8  
[coordinator@hpcommunityforest.org](mailto:coordinator@hpcommunityforest.org)  
(250) 229-2271

HPFP  
730 S. Ogilvie Road  
Harrop, B.C.  
V1L 6P9  
[sales@hpcommunityforest.org](mailto:sales@hpcommunityforest.org)  
(250) 551-5452

[hpcommunityforest.org](http://hpcommunityforest.org)

Follow Harrop Procter Forest Products on social media

 @hpsawmill

 Harrop Procter Forest Products

Local residents get a 10% discount, send us your email address if you would like to be informed of upcoming specials!

To request a donation, not-for-profit groups simply need to provide details of the project and community benefits on their letterhead and submit to: [coordinator@hpcommunityforest.org](mailto:coordinator@hpcommunityforest.org)